

HANNAH FRANK ART WORKSHEET

GOVANHILL INTERNATIONAL FESTIVAL 2021

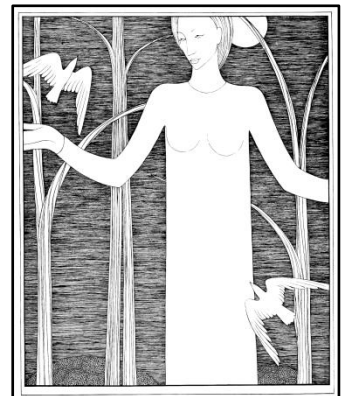
The daughter of Russian Jewish immigrants, Hannah Frank (1908-2008) was an Art Nouveau artist who lived in Govanhill from 1917 to 1939. Frank was inspired by literature so to celebrate her work, try your hand at this poetry worksheet! The only material needed is a pen or pencil, but feel free to allow your creativity to flourish.

Take a look at the following drawings by Hannah Frank and write down a few lines or words in response to each work. These lines could rhyme and follow a meter pattern or be in free verse – without rhyme and pattern! For instance, try creating a haiku: a three lined poem that contains five syllables in the first line, seven in the second and five in the third. Alternatively, try to think of an adjective or phrase for each letter of the piece's title – or for each character in the drawing. Once you have something written for all the prints on the trail, you could combine them to make one big Hannah Frank inspired poem!

Use the word bank to note down any key phrases or words that jump out to you.



Night, 1930



Woman with Birds, 1947



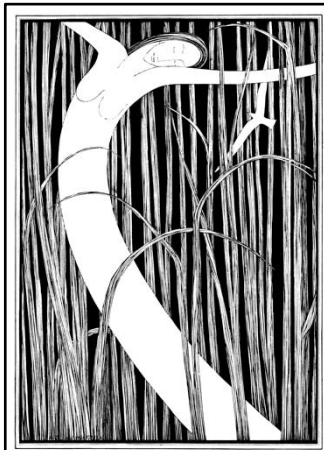
Spring Frieze, 1945



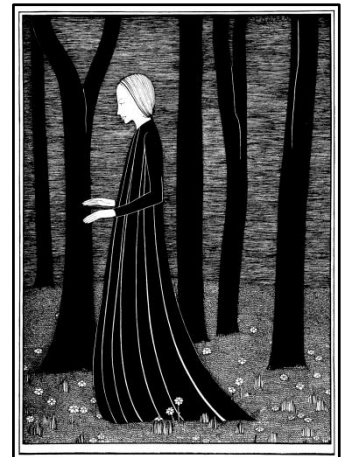
Fairies in a Wood,
1925



Sun, 1943



Dance, 1950



Woman and Trees, 1931

Word Bank

Well done! We hope you've created some beautiful work, if you feel like sharing it please tag or send us your writing @hannahfrankart on instagram.

Visit hannahfrank.org.uk for more information about Hannah Frank and her work.